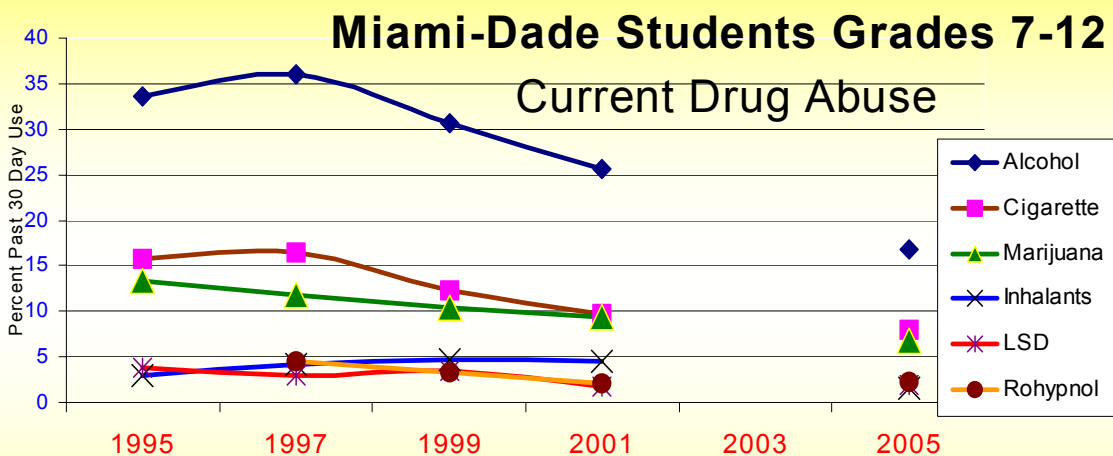


Priority One Prevention Plan Progress Report 2002

Middle and high school students in Miami-Dade County are continuing to report declining drug use according to the local 2001 Student Survey on Drug Use and Attitudes. The results of the most recent survey indicate that the community prevention plan to reduce levels of youthful drug abuse to half of the 1995 rate by 2005 is on track. Current **alcohol** use by 7th to 12th grade public and parochial students in Miami-Dade declined from 34 percent in 1995 to 26 percent in 2001. **Marijuana** use declined from 13 percent to 9 percent over the same 6-year period. **Cigarette** use declined from 16 percent to 10 percent of middle and high school students. **Cigarette** use declined from 16 percent to 10 percent of middle and high school students. **Cigarette** use declined from 16 percent to 10 percent of middle and high school students.

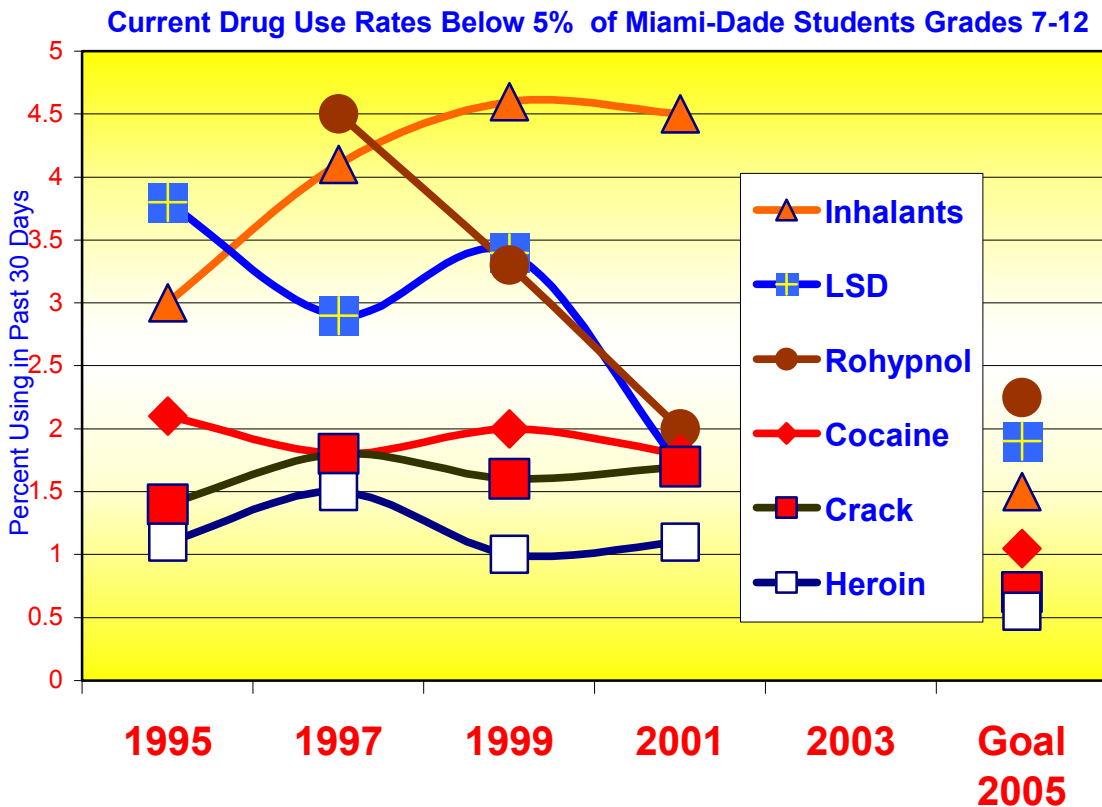


The Miami Coalition Survey of Public and Parochial School Students May 1995-May 2001 Preliminary Data, January 2002

Priority One Progress Report 2002

Miami-Dade Public and Parochial 7th to 12th Grade Students

Declines also occurred for **LSD** going from 4 percent to 2 percent, and the foreign sedative-hypnotic, **Rohypnol** abuse also fell from 4.5 percent to 2 percent between 1995 and 2001. Increases were noted for abuse of **inhalants**, rising from 3 percent to 4.5 percent. For the first time in 2001, prevalence rates were established for **MDMA** (“ecstasy”) at 2.8 percent of 7th to 12th graders, amphetamine-type drugs at 1.9 percent, and **non-medical use of tranquilizers** by 1.5 percent of students. The abuse of **prescription narcotics**, particularly **oxycodone**, was reported by 1 percent of middle and high school students as was the cough suppressant, dextromethorphan (**DxM**).



Priority One Progress Report 2002
Miami-Dade Public and Parochial 7th to 12th Grade Students

| %Currently Using | 1995 | 1997 | 1999 | 2001 Results | P1Goal 2001 | 2003 | P1Goal 2005 |
|-------------------------|-------------|-------------|-------------|---------------------|--------------------|-------------|--------------------|
| Alcohol | 33.6 | 36 | 30.6 | 25.6 | 23.52 | | 16.8 |
| Cigarette | 15.8 | 16.5 | 12.3 | 9.7 | 11.06 | | 7.9 |
| Marijuana | 13.4 | 11.8 | 10.4 | 9.4 | 9.38 | | 6.7 |
| Inhalants | 3 | 4.1 | 4.6 | 4.5 | 2.1 | | 1.5 |
| LSD | 3.8 | 2.9 | 3.4 | 1.7 | 2.66 | | 1.9 |
| Rohypnol | | 4.5 | 3.3 | 2 | 3.15 | | 2.25 |
| Cocaine | 2.1 | 1.8 | 2 | 1.8 | 1.47 | | 1.05 |
| Crack | 1.4 | 1.8 | 1.6 | 1.7 | 0.98 | | 0.7 |
| Heroin | 1.1 | 1.5 | 1 | 1.1 | 0.77 | | 0.55 |
| MDMA | | | | 2.8 | | | |
| Tranquilizers | | | | 1.5 | | | |
| Amphetamine type | | | | 1.9 | | | |
| Oxycodone et al | | | | 1.1 | | | |
| DxM | | | | 1 | | | |

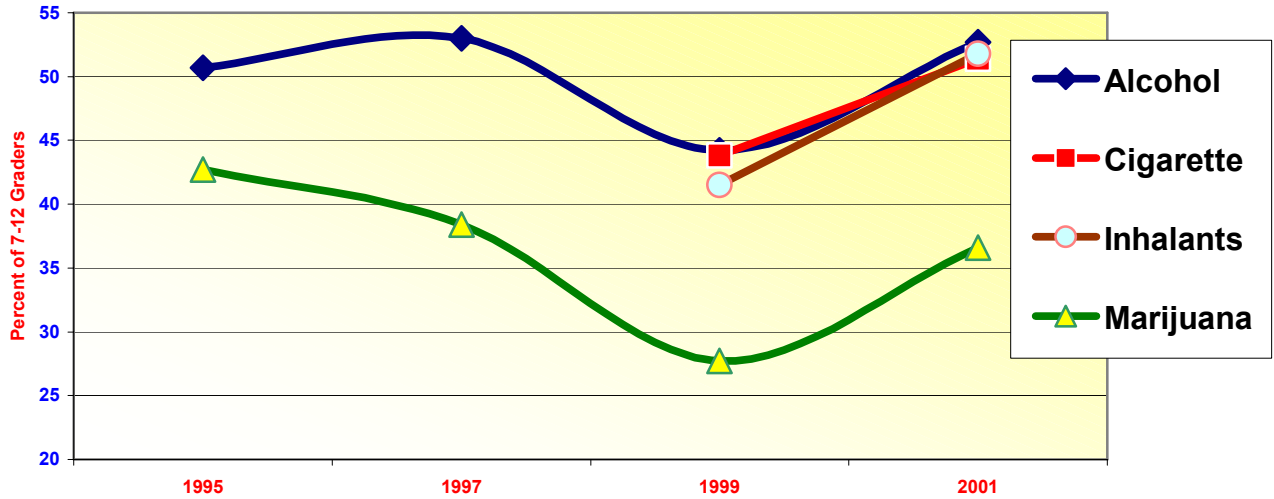
In addition to tracking the rates of use by students, the community prevention plan known as **Priority One** also measures key risk and protective factors for most drugs including:

- Perceived harmfulness,
- Drug use by friends,
- Social disapproval of friends' use, and
- Access and Availability of drugs to youth.

While declining use rates are 98 percent on target for the prevention plan's 10-year goal of reducing youthful drug abuse, there has been a deterioration of gains made during the early years of the plan in reducing risk factors and increasing protective issues related to drug use. Rates of students reporting that it would be "very easy" to get drugs rose for all drugs over 1999 rates, except for Rohypnol.

Priority One Progress Report 2002
Miami-Dade Public and Parochial 7th to 12th Grade Students

Youth Report: "Very Easy to Get Drugs"



Percent of Students Reporting "Very Easy" to Get Drugs

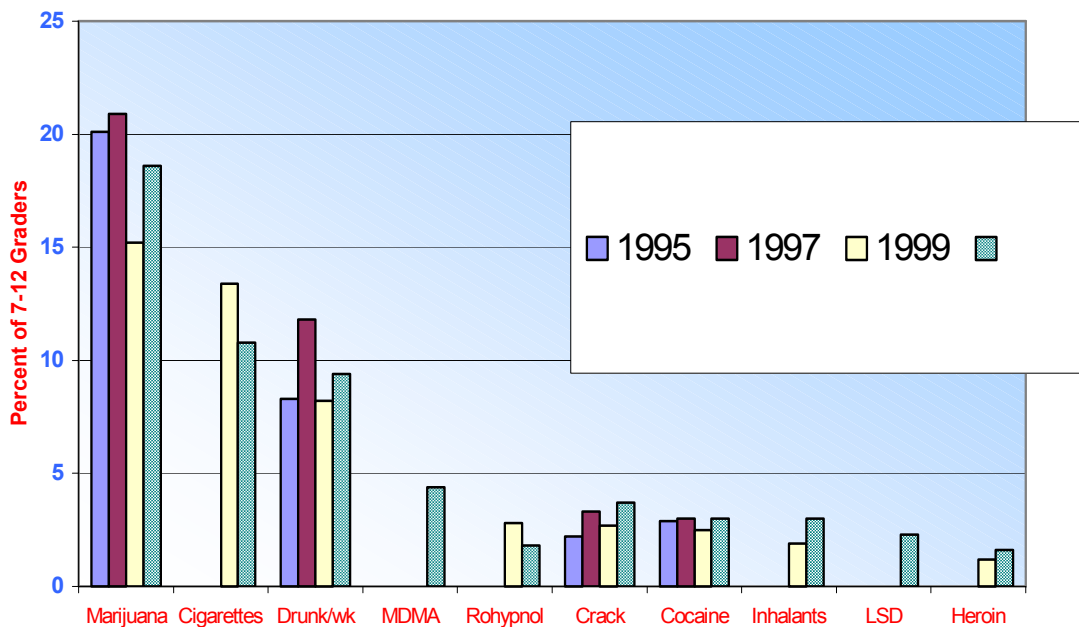
| Very Easy to Get Drugs | 1995 | 1997 | 1999 | 2001 |
|------------------------|------|------|------|------|
| Alcohol | 50.7 | 53 | 44.2 | 52.7 |
| Cigarette | | | 43.8 | 51.4 |
| Inhalants | | | 41.5 | 51.8 |
| Marijuana | 42.7 | 38.4 | 27.7 | 36.6 |
| LSD | | | | 12.3 |
| Rohypnol | | | 13 | 11.7 |
| Cocaine | 22 | 18 | 14.8 | 16.1 |
| Crack | 22 | 17.1 | 14.8 | 15.8 |
| Heroin | | | 11.7 | 12.1 |

Priority One Progress Report 2002

Miami-Dade Public and Parochial 7th to 12th Grade Students

The belief that “most or all of my friends” use **marijuana** rose from 15 percent in 1999 to 18 percent in 2001. The 2001 rate remains below the more than 20 percent of students who reported that their friends used the drug in 1995 and 1997. Use of **alcohol** by “most or all friends” also rose slightly in 2001. However, **cigarette** use by friends declined from 13 percent to 11 percent. Trends for friends’ use of other drugs below the 5 percent level remained stable with increases for **cocaine in both powder and crack forms, inhalants, and heroin**.

Youth Report: "Most or All Friends Use..."



Percent of Students Reporting “Most or All Friends” Use Drugs

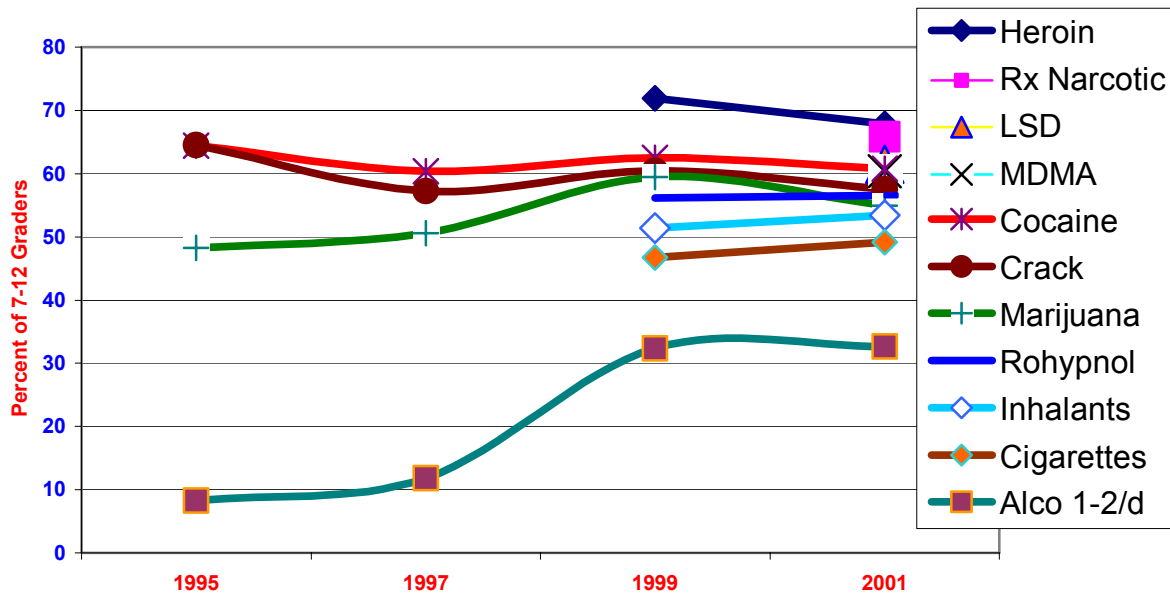
| Most or All Friends Use | 1995 | 1997 | 1999 | 2001 |
|-------------------------|------|------|------|------|
| Marijuana | 20.1 | 20.9 | 15.2 | 18.6 |
| Cigarettes | | | 13.4 | 10.8 |
| Drunk weekly | 8.3 | 11.8 | 8.2 | 9.4 |
| MDMA | | | | 4.4 |
| Rohypnol | | | 2.8 | 1.8 |
| Crack | 2.2 | 3.3 | 2.7 | 3.7 |
| Cocaine | 2.9 | 3 | 2.5 | 3 |
| Inhalants | | | 1.9 | 3 |
| LSD | | | | 2.3 |
| Heroin | | | 1.2 | 1.6 |

Priority One Progress Report 2002

Miami-Dade Public and Parochial 7th to 12th Grade Students

Rates for social disapproval of friends using drugs remained fairly stable between 1999 and 2001 with declines for **cocaine, heroin, and marijuana**. Small increases in social disapproval occurred for **Rohypnol, inhalants, and cigarettes**. Disapproval of friends' **alcohol** use was stable at 32 percent with the 1999 rate, but up from 8 percent in 1995.

Youth STRONGLY Disapproving of Friends Use



Percent of Students "Strongly Disapproving of Friends' Drugs Use"

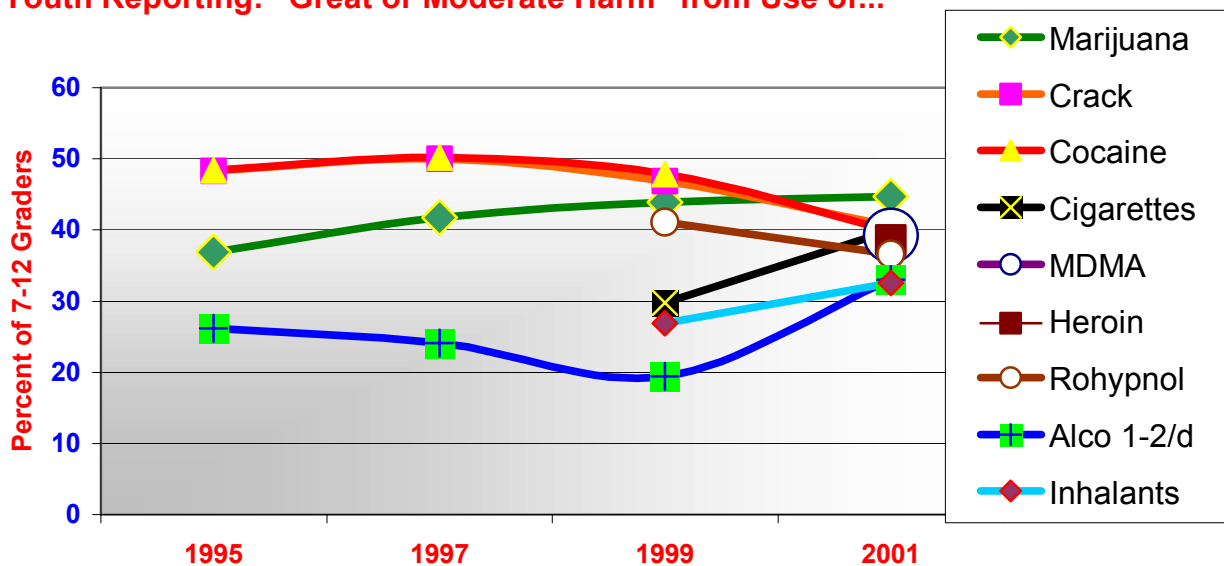
| Disapproving of Friends' Drug Use | 1995 | 1997 | 1999 | 2001 |
|-----------------------------------|------|------|------|------|
| Heroin | | | 71.9 | 67.9 |
| Rx Narcotic | | | | 65.8 |
| LSD | | | | 61.5 |
| MDMA | | | | 60.4 |
| Cocaine | 64.4 | 60.4 | 62.5 | 60.8 |
| Crack | 64.5 | 57.2 | 60.5 | 57.5 |
| Marijuana | 48.2 | 50.6 | 59.5 | 54.9 |
| Rohypnol | | | 56.1 | 56.5 |
| Inhalants | | | 51.4 | 53.4 |
| Cigarettes | | | 46.7 | 49.2 |
| Alcohol | 8.3 | 11.8 | 32.4 | 32.7 |

Priority One Progress Report 2002

Miami-Dade Public and Parochial 7th to 12th Grade Students

The percent of 7th to 12th graders reporting that friends would risk “great or moderate” harm by using drugs declined for **cocaine and crack** from 50 percent in 1997 to 40 percent in 2001 and for **Rohypnol** from 41 percent (1999) to 37 percent in 2001. Perceived harmfulness increased for **marijuana, cigarettes, inhalants, and alcohol** use. Rates of perceived harmfulness range from 33 percent (**alcohol, inhalants**) to 45 percent (**marijuana**). This risk and protective factor of perceived harmfulness of drug use appears to have the greatest impact in reducing youthful substance abuse.

Youth Reporting: "Great or Moderate Harm" from Use of...



Percent of Students Reporting Friends Risk “Great or Moderate Harm” Using Drugs

| Perceived Harmfulness | 1995 | 1997 | 1999 | 2001 |
|-----------------------|------|------|------|------|
| Marijuana | 36.9 | 41.7 | 43.9 | 44.7 |
| Crack | 48.3 | 50 | 46.9 | 40.6 |
| Cocaine | 48.4 | 50.2 | 47.9 | 39.9 |
| Cigarettes | | | 29.8 | 39.9 |
| MDMA | | | | 39.2 |
| Heroin | | | | 38.6 |
| Rohypnol | | | 41.1 | 36.6 |
| Alcohol | 26.2 | 24.1 | 19.4 | 33 |
| Inhalants | | | 26.9 | 32.6 |

Priority One Progress Report 2002

Miami-Dade Public and Parochial 7th to 12th Grade Students

Other questions on the 2001 School Survey revealed the following as reported by Miami-Dade 7th to 12th grade students.

- When asked if they would be willing to take a simple lab test to show that they do not use drugs, 79 percent of students said, “Yes.”
- In reporting who or what had a “great or very great” influence on their decision not to use drugs,
 - 60 percent said Parents
 - 45 percent said Teachers, Counselors
 - 42 percent said the D.A.R.E. program
 - 41 percent said anti-drug commercials on television
 - 34 percent said Police officers
 - 33 percent said Friends
- While 61 percent of students reported seeing anti-drug commercials on television “at least daily or more than once a day,” 41 percent stated they had a “great or very great” influence on making them less likely to use drugs. Another 40 percent reported the commercials greatly overstated the risks of drug use.
- More than half of all students reported having worried, at least a little, about being injured because of violence against them. While 9 percent of students reported, “they worried a lot” about being injured at school or home, 27 percent said they “worried a lot about being injured by a gun.”
- When asked if anyone in their family has problems with alcohol or other drugs, 26 percent of students said yes, another 8 percent said they didn’t know if someone did or did not.

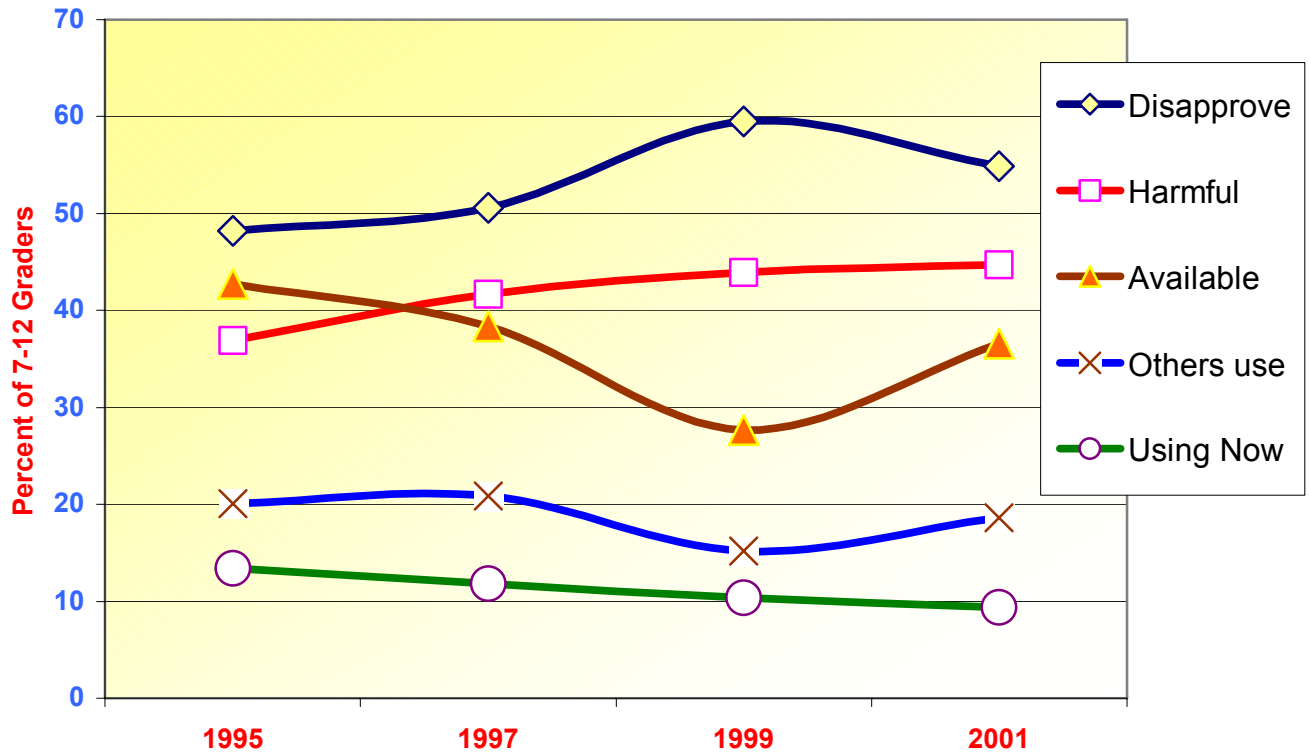
The **Priority One** prevention plan’s outcome measures are derived from The Miami Coalition School Survey conducted by community volunteers in all public and parochial middle and high schools in Miami-Dade County. The survey is conducted in May of odd numbered years. In 2001, there were 2,478 students respondents to the Survey.

Priority One Progress Report 2002

Miami-Dade Public and Parochial 7th to 12th Grade Students

The following table and charts link the risk and protective factors for selected drugs to the prevalence of use reported by students. Included are reviews of the reported trends for marijuana, cigarettes, alcohol, and MDMA, powder cocaine hydrochloride, and crack cocaine.

Miami-Dade Youth Marijuana Risk Factors

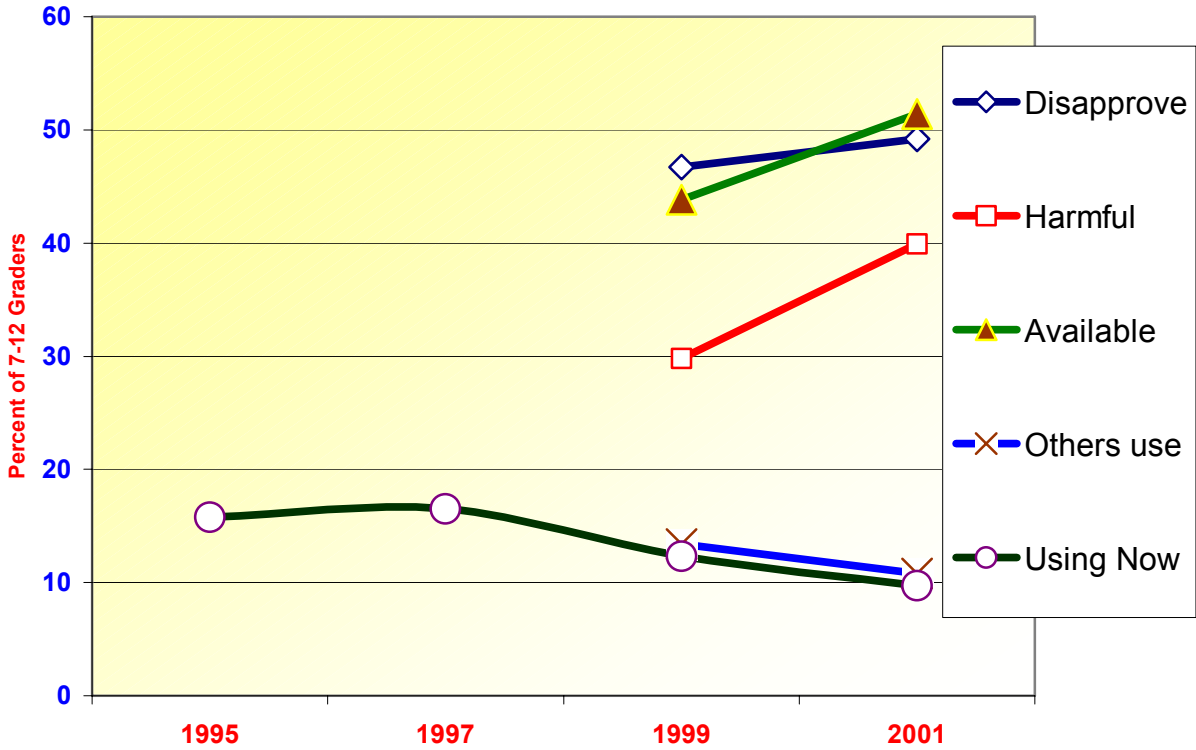


Percent of Students Reporting Risk & Protective Factors for Marijuana

| Marijuana Risk Factors | 1995 | 1997 | 1999 | 2001 |
|-------------------------|------|------|------|------|
| Disapprove | 48.2 | 50.6 | 59.5 | 54.9 |
| Perceived Harm | 36.9 | 41.7 | 43.9 | 44.7 |
| Easy to Get | 42.7 | 38.4 | 27.7 | 36.6 |
| Most Friends Use | 20.1 | 20.9 | 15.2 | 18.6 |
| Own Use Now | 13.4 | 11.8 | 10.4 | 9.4 |

Priority One Progress Report 2002
 Miami-Dade Public and Parochial 7th to 12th Grade Students

Miami-Dade Youth Cigarette Use Risk Factors

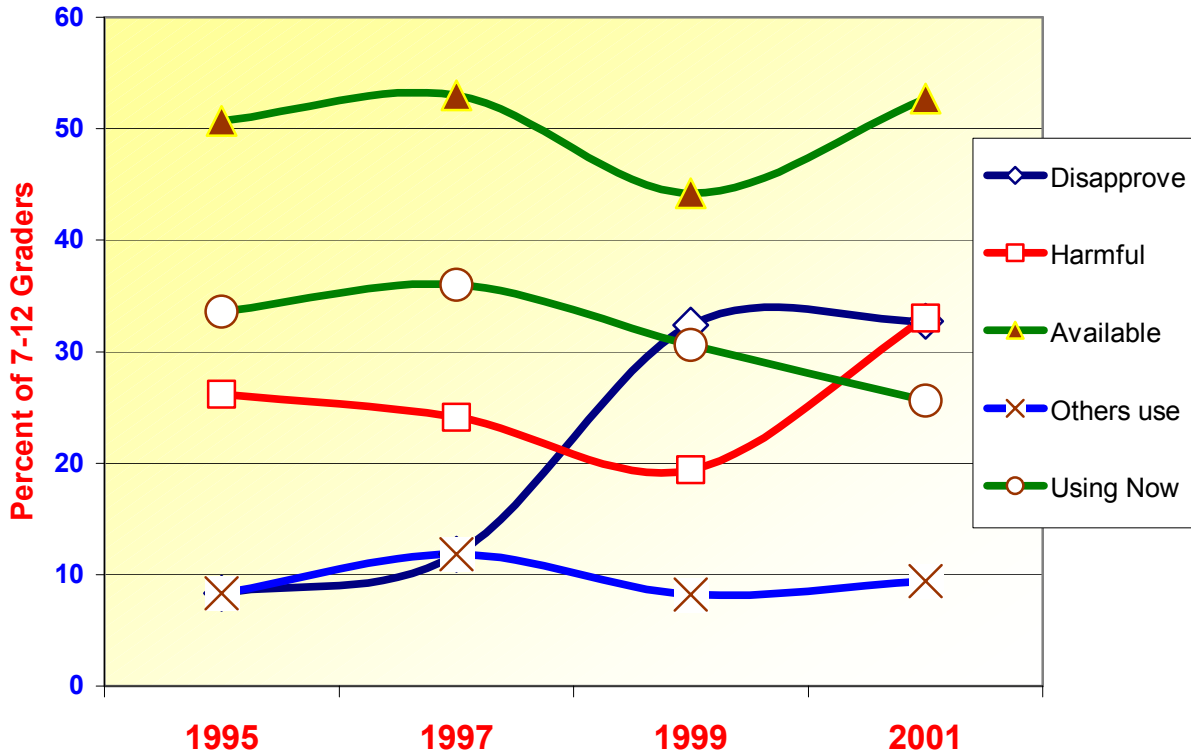


Percent of Students Reporting Risk & Protective Factors for Cigarettes

| Cigarette Risk Factors | 1995 | 1997 | 1999 | 2001 |
|-------------------------------|-------------|-------------|-------------|-------------|
| Disapprove | | | 46.7 | 49.2 |
| Perceived Harm | | | 29.8 | 39.9 |
| Easy to Get | | | 43.8 | 51.4 |
| Most Friends Use | | | 13.4 | 10.8 |
| Own Use Now | 15.8 | 16.5 | 12.3 | 9.7 |

Priority One Progress Report 2002
Miami-Dade Public and Parochial 7th to 12th Grade Students

Miami-Dade Youth Alcohol Risk Factors

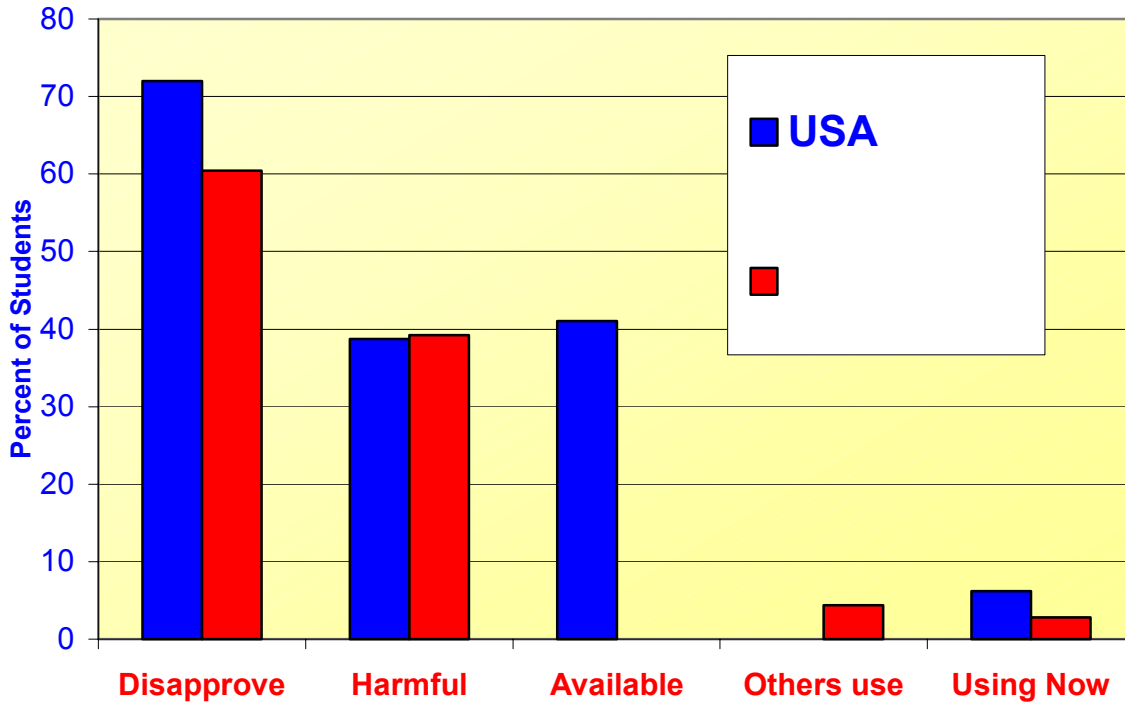


Percent of Students Reporting Risk & Protective Factors for Alcohol

| Alcohol Risk Factors | 1995 | 1997 | 1999 | 2001 |
|-------------------------|------|------|------|------|
| Disapprove | 8.3 | 11.8 | 32.4 | 32.7 |
| Perceived Harm | 26.2 | 24.1 | 19.4 | 33 |
| Easy to Get | 50.7 | 53 | 44.2 | 52.7 |
| Most Friends Use | 8.3 | 11.8 | 8.2 | 9.4 |
| Own Use Now | 33.6 | 36 | 30.6 | 25.6 |

Priority One Progress Report 2002
Miami-Dade Public and Parochial 7th to 12th Grade Students

MDMA Abuse Risk Factors



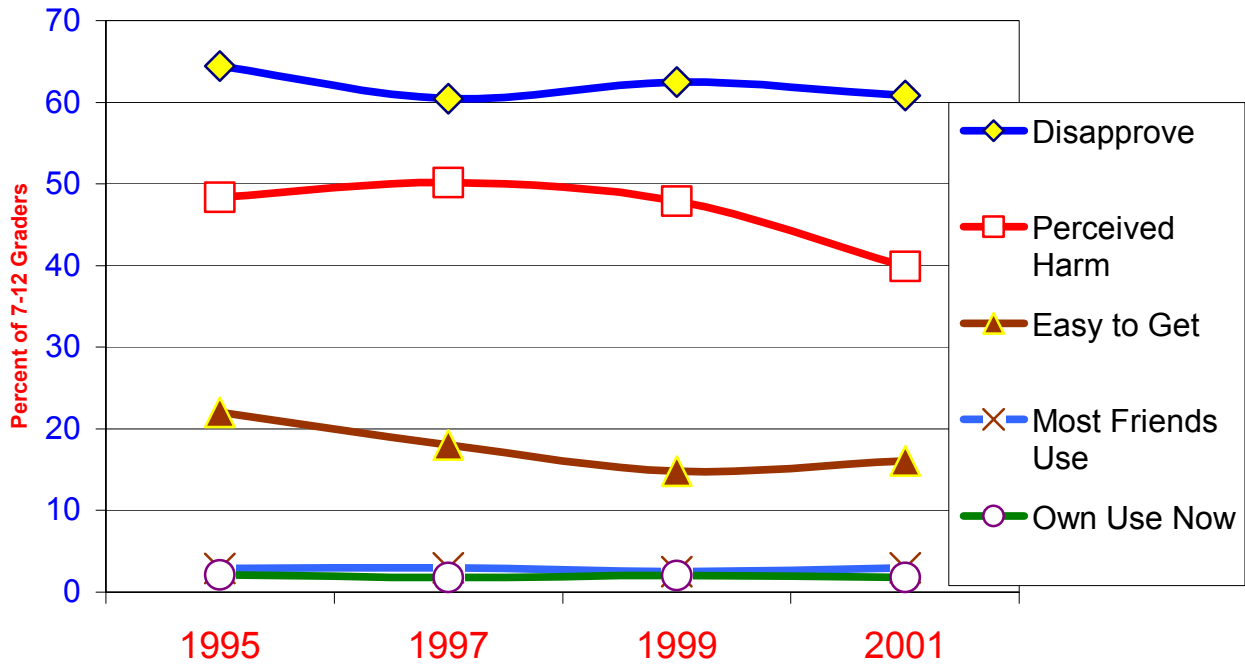
USA data based on the 2001 NIDA Monitoring The Future Survey

Percent of Students Reporting Risk & Protective Factors for MDMA

| MDM Risk Factors | USA | Miami-Dade |
|-------------------------|------|------------|
| Disapprove | 72 | 60.4 |
| Perceived Harm | 38.7 | 39.2 |
| Easy to Get | 41 | |
| Most Friends Use | | 4.4 |
| Own Use Now | 6.2 | 2.8 |

Priority One Progress Report 2002
Miami-Dade Public and Parochial 7th to 12th Grade Students

Miami-Dade Youth Cocaine HCI Risks

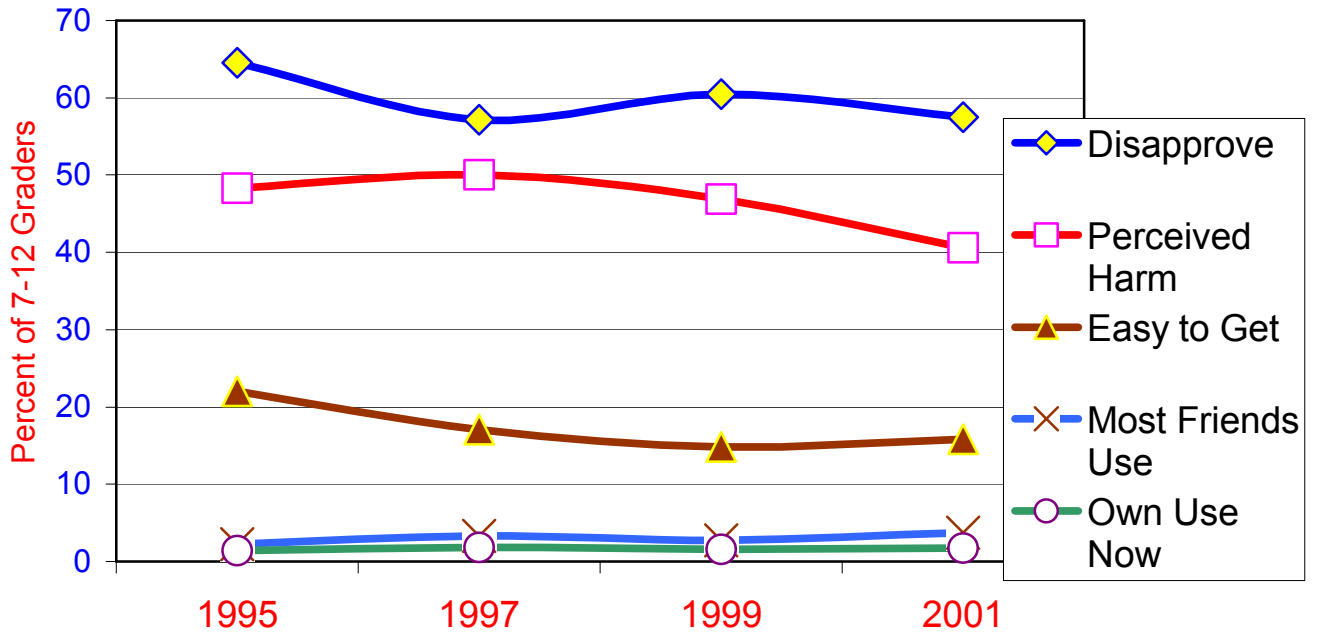


Percent of Students Reporting Risk and Protective Factors
for Powder Cocaine Hydrochloride

| Powder Cocaine Risk Factors | 1995 | 1997 | 1999 | 2001 |
|--------------------------------|------|------|------|------|
| Disapprove | 64.4 | 60.4 | 62.5 | 60.8 |
| Perceived Harm | 48.4 | 50.2 | 47.9 | 39.9 |
| Easy to Get | 22 | 18 | 14.8 | 16.1 |
| Most Friends Use | 2.9 | 3 | 2.5 | 3 |
| Own Use Now | 2.1 | 1.8 | 2 | 1.8 |

Priority One Progress Report 2002
 Miami-Dade Public and Parochial 7th to 12th Grade Students

Miami-Dade Youth Crack Risk Factors



Percent of Students Reporting Risk and Protective Factors for Crack Cocaine Abuse

| Crack Cocaine Risk Factors | 1995 | 1997 | 1999 | 2001 |
|----------------------------|------|------|------|------|
| Disapprove | 64.5 | 57.2 | 60.5 | 57.5 |
| Perceived Harm | 48.3 | 50 | 46.9 | 40.6 |
| Easy to Get | 22 | 17.1 | 14.8 | 15.8 |
| Most Friends Use | 2.2 | 3.3 | 2.7 | 3.7 |
| Own Use Now | 1.4 | 1.8 | 1.6 | 1.7 |